

DVRupgrade Kit Capacity and TurboNet Kit DirecTiVo Installation Instructions Single and Dual Drive Replacement Kit Sony SAT-T60, Philips DSR6000, Hughes GXCEBOT

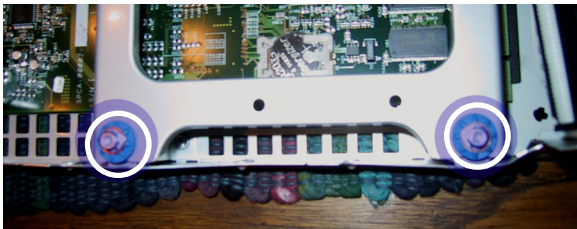
Note: Read all instructions first! Do not place your unit or its components on a carpeted floor while open. The internals of your unit contain sensitive electronic components that can be damaged by static electricity. Under no circumstances should you touch any component of the unit's power supply, even if the unit is unplugged; it has the potential to shock you.

The drives included with your kit are pre-configured and jumpers are already set appropriately. DO NOT CHANGE JUMPER SETTINGS ON ANY DRIVE WE SUPPLY WITHOUT CONTACTING DVRUPGRADE FIRST!

Step 1 Using the Torx T10 driver included with your kit, remove the four cover screws on the rear of the unit.



Step 2 Remove the two screws securing the left side of the drive mounting bracket; it's ok to leave the brass bushings in place, but if they come out with the screws, just put them aside for safe-keeping.

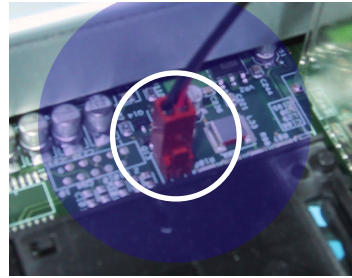


Step 3 Your unit may contain a screw near the power connector on the right of the drive mounting bracket; carefully remove it with the Torx driver. **Do not touch the power supply!** You may want to clip the white, plastic cable-tie holding the power

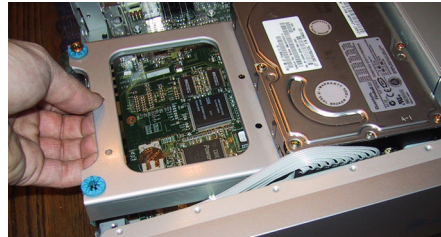


connector in place; this will allow you to use your fingers to secure the screw as you remove it.

Step 4 Unplug the fan's power connector from the system board.



Step 5 Gently lift the disk drive tray from the outside edge, as shown. As the tray lifts, pull slightly to the left and gently wiggle it until it slides free of the bracket on the right side of the chassis; do not yank the drive tray or drop the inside edge onto the system board.



Step 6 As you lift the drive tray from the unit, note that the drive and power cables are still connected. Carefully remove these and set the entire assembly, drive-down, upon a table-top.

Step 7 If you have a single drive unit, remove it from the tray and store in a safe place as a 'backup'. Likewise, if you have a dual drive unit, remove both drives and put them away for safe-keeping.

Step 8 Attach the drive(s) of your replacement drive kit to the drive tray. It does not matter where the drives are placed, as long as the orientation is such that the back of the drives (where the drive and power connectors are) face towards the front of the unit.

Step 9 If your unit contains a drive cable with connectors for two drives, it is not necessary to use the one included with your kit. If your unit contains only one power connector for a disk drive, use the supplied "Y" adapter to "split" the power for two drives.

Do not re-install the drive tray yet - just put it aside as we will now move onto your TurboNet Installation...

TurboNet Adapter Installation

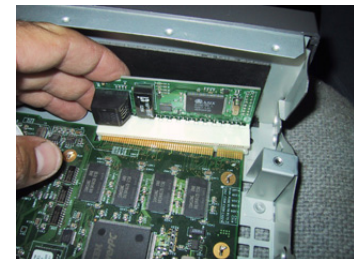
Step 10 Note the gold connector towards the front edge of your DirecTiVo system board. This is where you will install your TurboNet card.



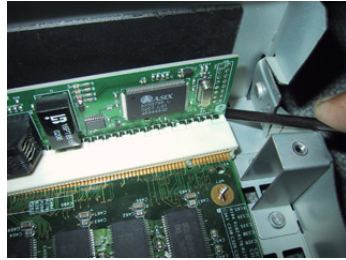
Step 11 You may find it easier to install the card by first removing the rubber foot just beneath the same corner of your DirecTiVo. The rubber foot can be replaced after the card is installed. Use a small chisel tipped screwdriver to gently pry the plastic pin from the center of the rubber foot.



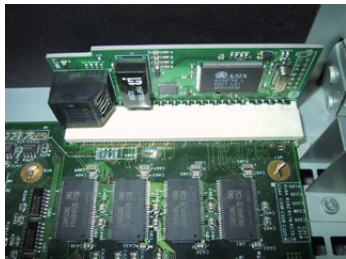
Step 11 Carefully align the TurboNet card as shown in the picture below. There is not much clearance between the back of the board and the front of your unit, we recommend you gently wiggle the board onto the connector as far as it will go on the left side without applying much pressure.



Step 12 If you cannot use fingers to bring the rightmost portion of the TurboNet onto DirecTiVo system board, use the end of the supplied Torx driver. **This does not require any strength. Do not force anything. This is an exercise in finesse, and with patience, you can easily work the TurboNet board onto the edge connector.**



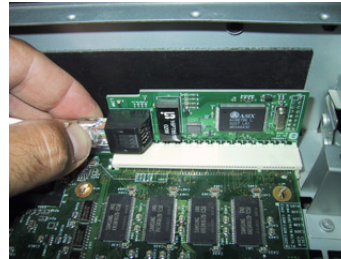
Step 13 Shown below is a photo of the installed TurboNet adapter. Notice that the gold connector is almost completely obscured. Be sure that your board is fully 'seated' before proceeding to the next step.



Step 14 Connect one end of the supplied patch cable to the TurboNet adapter. On the other end of the patch cable you may connect the 'female-to-female' adapter and carefully run the patch cable along the front edge of your unit's interior. If you plan on placing the cover on your unit once your installation is complete, you will need to create a hole large enough for the network connector to pass through. We recommend using a small wire-cutter to snip and enlarge the vent holes on the bottom left side of the unit. Just clip out a "+" from the edge and the cable will easily fit.

Final Steps

Step 15 Now retrieve your drive tray and carefully reconnect power and drive cables. If using the supplied cable, be sure the blue connector is reserved for the TiVo system board, and that it fits properly (see steps 8 and 9) Gently re-insert the drive tray being careful not to pull out any connectors or crush any wires or cables.



Step 16 Replace the screws on the left of the drive assembly. It is not necessary to replace the screw on the right side of the drive assembly. **Reconnect the power connector for the cooling fan (see step 4) or your unit will overheat while in operation.**

Step 17 Close up your unit, connect everything and power it up! You can verify a successful installation by checking the System Information screen under Messages and Setup.

If you receive a 'hardware error' or 'error 51' do not be alarmed; simply perform a **'clear and delete everything'** from the TiVo setup menus; this process can take up to an hour, and once this is complete, re-run guided setup. All will be back to normal.

Note that your DVRUpgrade Capacity Upgrade / TurboNet Replacement drive kit has been configured for

your network, therefore all daily calls will proceed through your broadband connection. If you did not specify an IP address and subnet when ordering your kit, it has been setup to use DHCP. To 'discover' your IP address, you will need to use your firewall/router to view the IP addresses of DHCP clients on your network (eg. on Linksys firewall/routers the default url would be: <http://192.168.1.1/DHCP.htm>)

Once you've determined your IP address, you can browse the TiVo web by entering your IP address in any browser window, and telnet / ftp to your unit for additional capabilities.

Congratulations, you are done! If you have any questions or problems with your installation, please contact us using the form on our website. Additional resources are available at <http://www.dvrupgrade.com/support/> and these instructions are also available online at http://www.dvrupgrade.com/install_instructions.cfm.

Thanks again for purchasing your upgrade kit from DVRUpgrade, the home of the original TiVo Upgrade!