

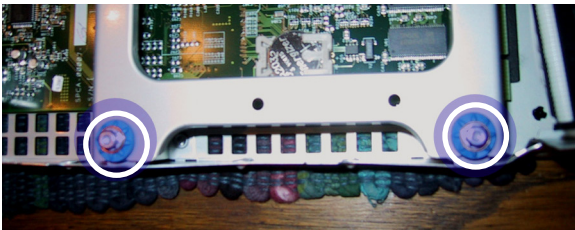
DVRupgrade Kit "Classic" TiVo and AT&T Series2 Installation Instructions

Step 1 Using the Torx T10 driver included with your kit, remove the four cover screws on the rear of the unit.



Step 2 Remove the two screws securing the left side of the drive mounting bracket; it's ok to leave the brass bushings in place, but if they come out with the screws, just put them aside for safe-keeping.

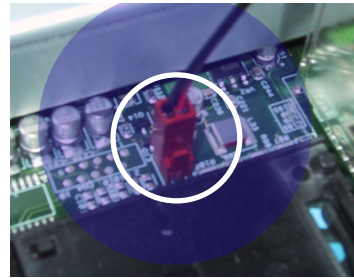
Step 3 Your unit may contain a screw near the power



connector on the right of the drive mounting bracket; carefully remove it with the Torx driver. **Do not touch the power supply!** You may want to clip the white, plastic cable-tie holding the power connector in place; this will allow you to use your fingers to secure the screw as you remove it.

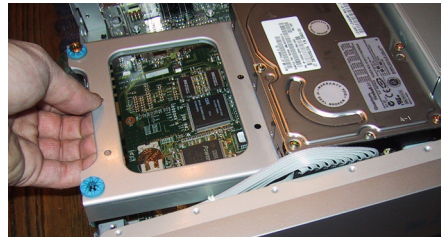


Step 4 Unplug the fan's power connector from the system board.



Step 5 Gently lift the disk drive tray from the outside edge, as shown. As the tray lifts, pull slightly to the left and gently wiggle it until it slides free of the bracket on the right side of the chassis; do not yank the drive tray or drop the inside edge onto the system board.

Step 6 As you lift the drive tray from the unit, note that the drive and power cables are still connected. Carefully remove these and set the entire assembly, drive-down, upon a table-top.



Step 7 If you are adding a drive, reposition the jumper on the existing drive to the left-most set of pins, as shown below.

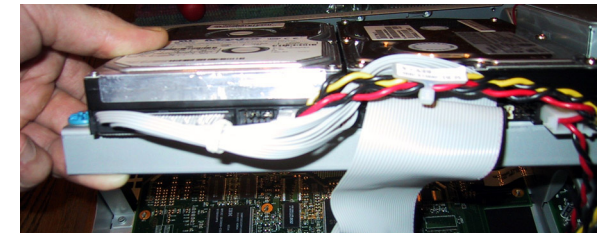


Step 8 If you are adding a drive, remove two of the four screws used to secure the existing drive to the drive bracket. Use these two screws to secure the upgrade drive to the mounting bracket in a similar fashion. If you are replacing a drive, or both drives, simply remove all four (or eight) screws and use them to secure the new

drives in place. If you are installing two drives, it does not matter where you put each of the drives.

Step 9 If your unit contains a drive cable with connectors for two drives, it is not necessary to use the one included with your kit. However, replacing the cable is recommended - ensure that the blue connector is inserted into the TiVo system board. Carefully install the black connectors on the drives similar to the illustration below (either connector to either drive, as long as the cable does not get in the way of the drive tray. If your unit contains only one power connector for a disk drive, use the supplied "Y" adapter to "split" the power for two drives.

Step 10 Connect all drives to both power and disk drive cables. Gently re-insert the drive tray being careful not to pull out any connectors or crush any wires or cables.



Step 11 Replace the screws on the left of the drive assembly. It is not necessary to replace the screw on the right side of the drive assembly. **Reconnect the power connector for the cooling fan (see step 4) or your unit will overheat while in operation.**

Step 12 Close up your unit, connect everything and power it up! You can verify a successful installation by checking the System Information screen under Messages and Setup. If you are replacing drives, you will need to perform a 'clear and delete everything' from the System Reset menu and proceed with Guided Setup as instructed.

Congratulations, you are done! If you have any questions or problems with your installation, please contact us using the form on our website. Additional resources are available at <http://www.dvrupgrade.com/support/> and these instructions are also available online at http://www.dvrupgrade.com/install_instructions.cfm.

Thanks again for purchasing your upgrade kit from DVRupgrade, the home of the original TiVo Upgrade!